



Island Volunteer
Caregivers

Making Neighbor-to-Neighbor
Connections

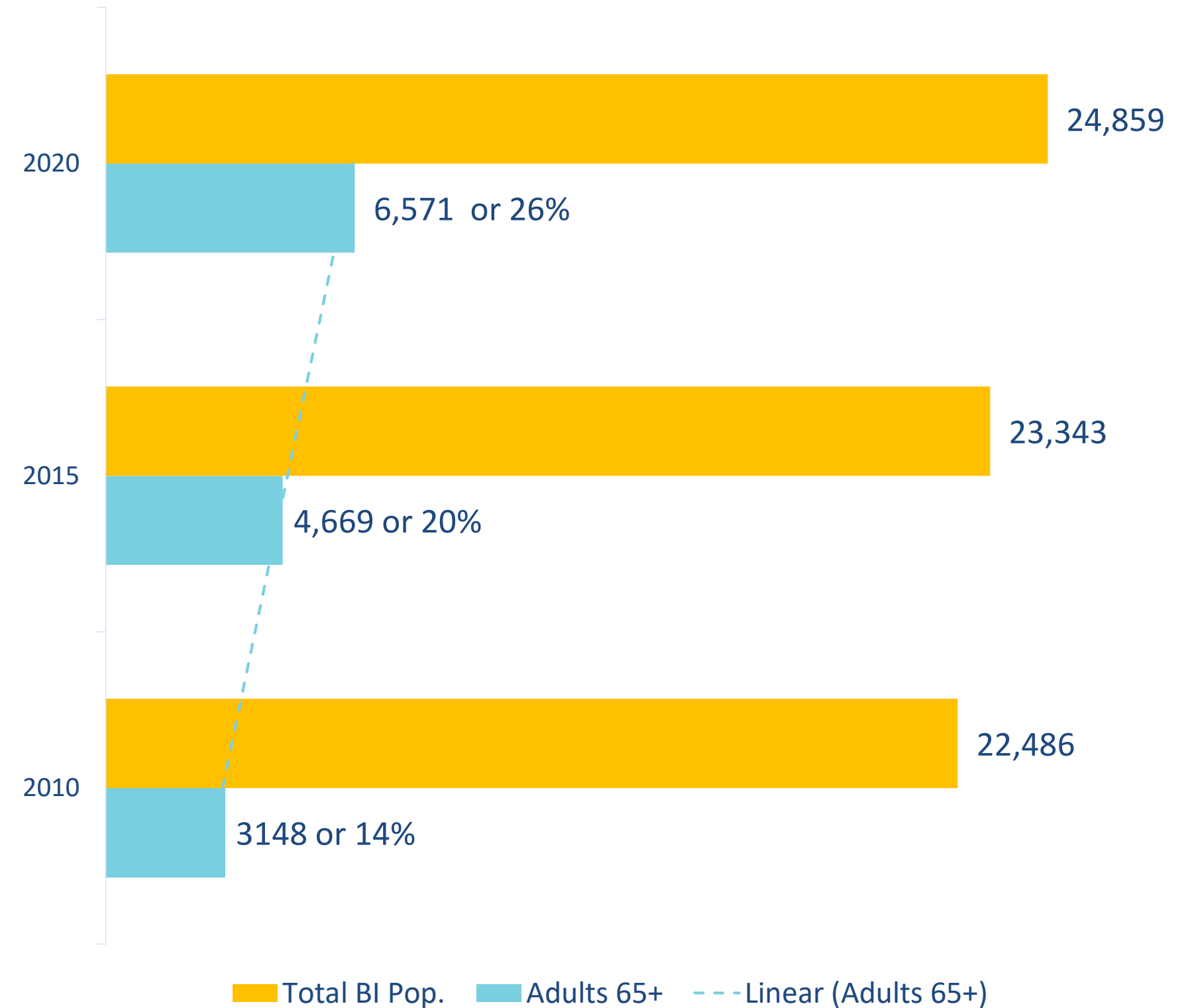
Since 1996



Our Island Demographics*

- BI is seen as a great place to retire
- BI has a higher ratio of seniors among area counties
 - Over 1 in 4 adults are age 65+ (29% in 2022)
- BI has the highest median age of older adults in the area
 - BI is 49.7, Kitsap County 39.2
 - Seattle is 35.2, King County 37
- 5% of seniors on BI live below the poverty line of \$13,590**

The Increasing Senior Population on BI



Island Volunteer
Caregivers



*US Census Data 2021, 2020, 2015, 2010

** Bainbridge Community Foundation 2022 State of the Sector report



Human services are needed to meet the challenges of daily life for an aging adult



We are all aging but as we age, we may face challenges due to physical changes. As a result, we may need assistance*

- Medical Transportation needs
- Errands Assistance
- Companionship and Socialization
- In-home support (light housekeeping, yard services)
- Caregiving support (respite)
- Navigating senior services

The emotional health of older adults also change- Among top challenges facing our senior community is Isolation and Loneliness**

- 54% feel more isolated (a rate higher than the general population)
- 28% feel a lack of companionship
- 47% are concerned with their physical health
- 37% are concerned with their emotional health

*2022 IVC Community Needs Assessment Survey

**Bainbridge Community Foundation 2021 Research

Island Volunteer Caregivers...



- We are a high-touch, relationship-based 501c3 nonprofit
- We are “Powered” by over 300 vetted and trained volunteers
- We serve over 400 care receivers on Bainbridge Island and in nearby areas
- Our services are free of charge
- Supported by the National Volunteer Caregivers Network (NVCN)
- Small staff
 - Executive Director – 16 years on Bainbridge Island with experience working with several island nonprofits
 - Six staff members are dedicated to matching the needs of our care receivers with volunteers resulting in profound connections



Island Volunteer
Caregivers

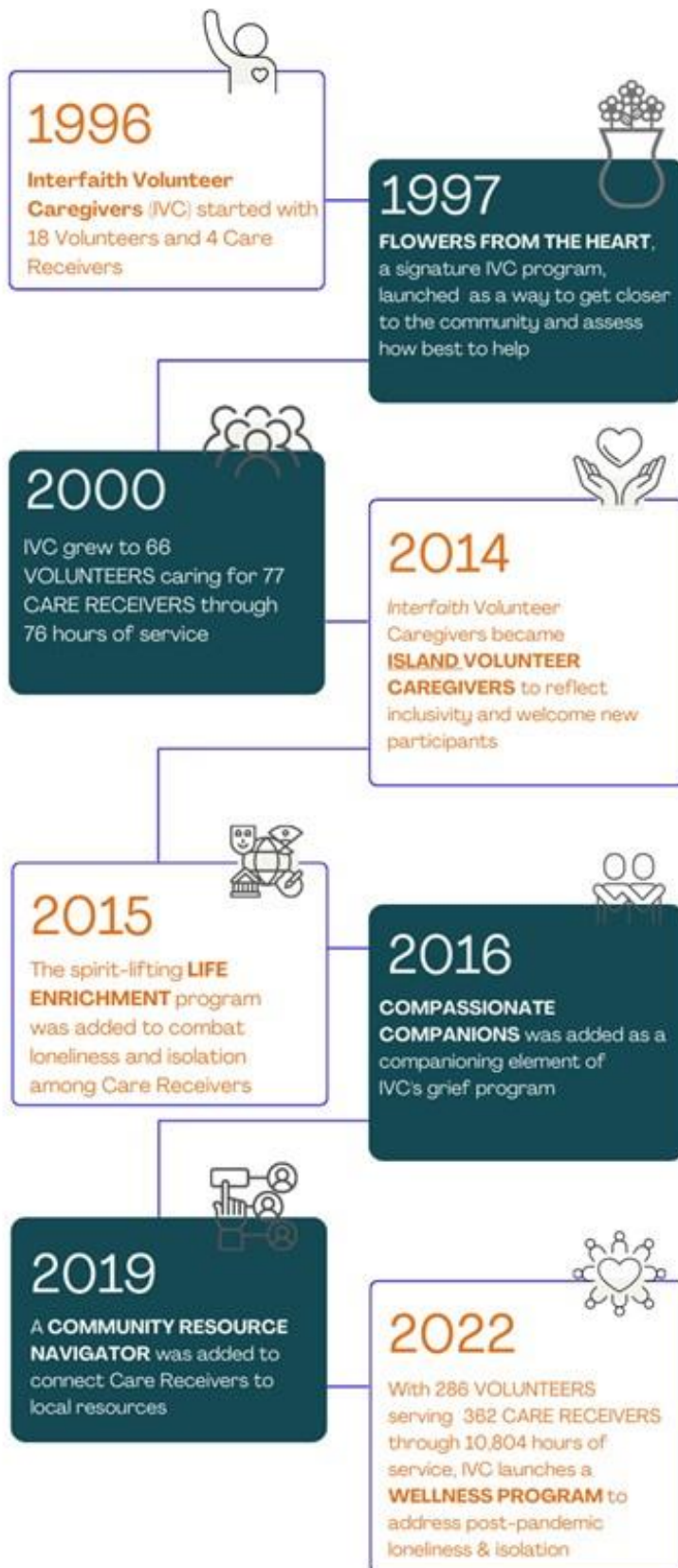


Our Mission

IVC connects neighbors facing challenges related to aging, disability, or adversity with volunteers and resources to support independent and fulfilling lives.

Our History

Island Volunteer Caregivers: A History



Learn more at ivcbainbridge.org

- Founded in 1996, Interfaith Volunteer Caregivers (IVC) began with island religious congregations recognizing needs of vulnerable neighbors
- Judith Louderback secured initial funding from the Robert Woods Johnson Foundation and channeled through Kitsap Hospice.
- A Board of Directors was established with Joyce Veterane, Joan Treacy, Dick Gregory, Sue and Bob Kuebler as the executive committee along with help from Beulah Downing. IVC was officially incorporated on April 29th, 1997
- Name change in 2014 to Island Volunteer Caregivers for more inclusivity

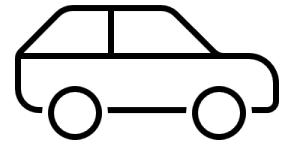


Island Volunteer Caregivers

All services begin with:

**Resource Navigation,
advocacy or referral
and/or an assessment**

IVC's Core Services



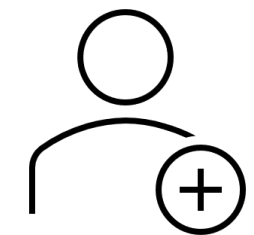
Transportation (on and off island)

Keeping hard-to-get medical appointments is crucial for Care Receivers and a ride to run errands offers a level of independence that keeps them thriving



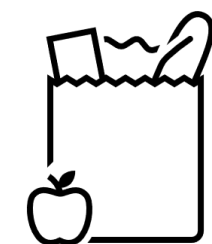
Light Housework and Gardening

A clean home or yard can lift someone's spirits and aid the healing process for care receivers recovering from various ailments



Companionship

Visiting face to face; calling to offer encouragement; or taking a care receiver for a scenic walk or drive offers life-giving connection that truly enriches their lives



Errands & Groceries

Care Receivers have a better chance of avoiding food insecurity when volunteers accompany them to get groceries or pick their order up and deliver it to their home



Core Support Programs



IVC connects Care Receivers to companionship-based services and activities that help **combat loneliness and isolation**, thereby minimizing risk factors that may inhibit their ability to age and thrive in place.



IVC offers a variety of **spirit-lifting life enrichment** programs for Care Receivers ranging from small group excursions to arts and entertainment offerings, walking, shopping, and more.



IVC supports people on their **journey through grief** through two types of Grief Support: Grief Support Groups and a One-on-One support program called Compassionate Companions.



IVC's Family & Friends Caregivers Support Group is open to **anyone caring for a loved one**. Meet with a supportive group of people who can relate and won't judge.



IVCs Signature Program

- *Flowers From the Heart*



IVC Volunteer and Care Receiver Facts

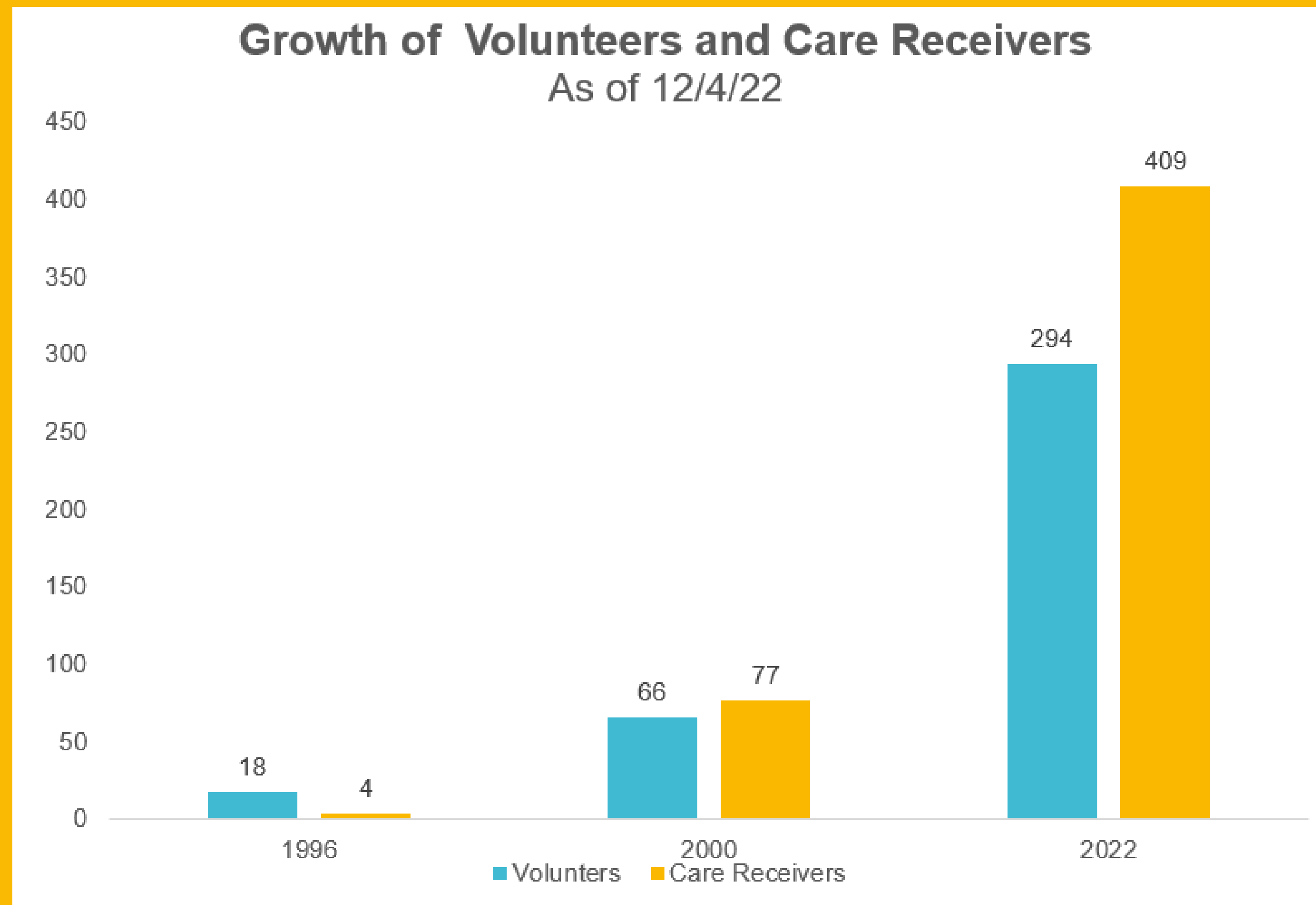


Volunteers

- Number of volunteers and care receivers has grown exponentially since 1996
- IVC's volunteer base is aging, 39% of our Volunteers are 70+
- IVC volunteers are our greatest asset.

Care Receivers

- 55% of our Care Receivers are over 80
- The need for off-island services is out pacing our volunteers availability
- Likely there will be an increased demand for services
- CRs are generally more frail, less able to travel.



Become a Volunteer or a Care Receiver



Become a Volunteer!

- The beauty of volunteering with IVC – **very light commitment!**
- Go to ivcbainbridge.org
- Fill out and submit our online volunteer form
 - ❑ Schedule an interview
 - ❑ Watch our online training videos
 - ❑ Complete Sterling background check
 - ❑ Submit 2 references
 - ❑ Complete car walk thru

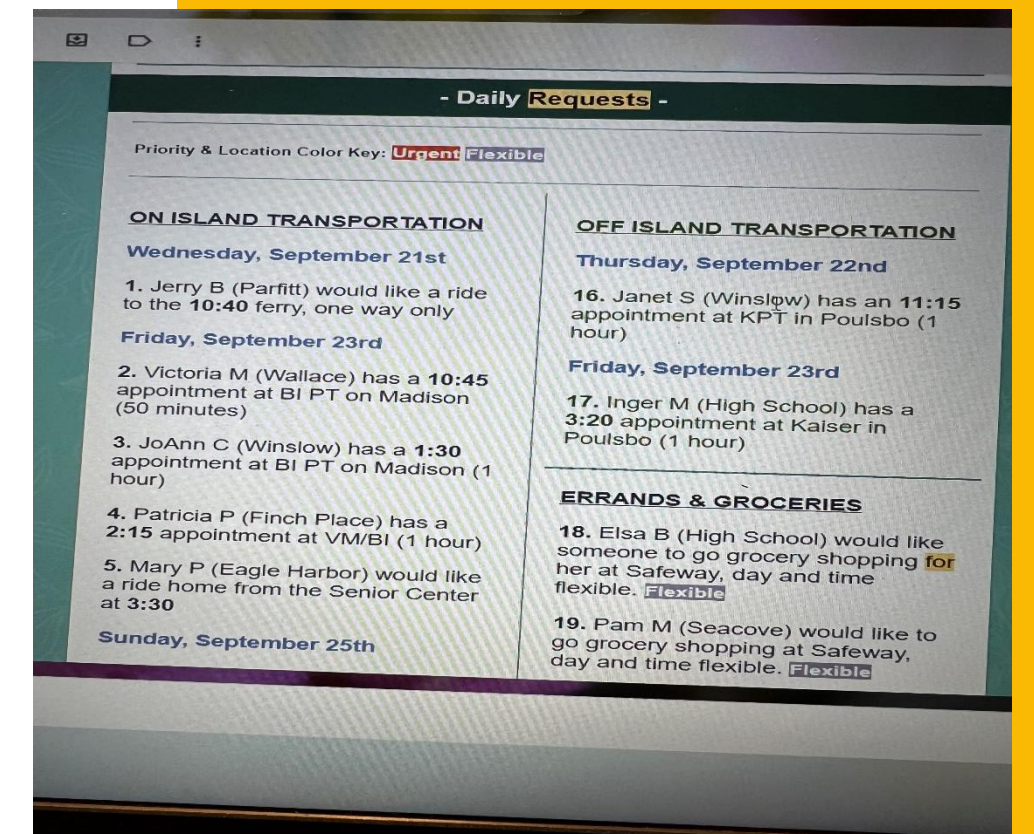
Need Assistance? Become an IVC Care Receiver

- Call the IVC office at 206-842-4441
 - ❑ Answer a few questions
 - ❑ You must be able to transfer to a car independently.
 - ❑ Schedule a meeting with our Community Navigator for an in-home assessment

The Process of meeting needs and making volunteer connections

The Process – transportation requests

- ❑ Care receivers call the office with a request(s)
- ❑ All requests are logged in immediately into our database
- ❑ 7 day requests are sent to volunteers – daily thru our IVC Daily Request email
- ❑ Volunteers chose what they are capable of picking-up and send a note to the IVC Office Administrator
- ❑ IVC Programs have separate process



The IVC Report Card

1. Transportation for medical, dental, physical therapy and counseling appts

2156 hours and 14,837 miles driven

2. Transportation for activities to maintain health and well-being

115 hours and 611 miles driven

3. In-home services such as companionship, light housekeeping or meal prep, light yard care or home maintenance, assistance with pet care, respite care, reading to visually impaired persons

1924 hours and 4,586 miles driven

4. Errands, including grocery shopping, picking up prescriptions, Flowers From the Heart Program

1,962 hours and 10,988 miles driven

5. Phone reassurance

1,408 hours

6. Quality of life activities, such as going to a concert, movie, museum, Music Appreciation or Book Group

272 hours and 853 miles driven

7. Caregivers and Grief Support Groups

- 873 hours of Compassionate Companion and Grief Support
- IVC provided Helpline food as well as multiple meal deliveries in the amount of 1,564 hours) and 7,926 miles driven

8. Vaccination and Flu clinic reservation calls and transportation

Since January 2021, IVC staff and our volunteers have called or taken calls from over 1,000 people ranging from 65 to 103 years old and have helped over 600 adults receive their COVID and Flu vaccines

*Hours worked in 2021 was 11,514

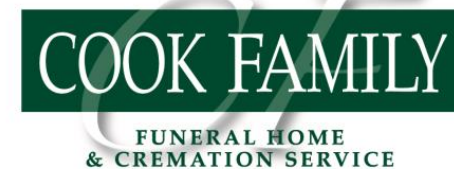
**The Independent Sector (4/18/22) value's a volunteer hour at \$29.95 equating to \$299,023 hours of IVC volunteer services



Our Partners and Sponsors

IVC has a reputation as a leader in building and contributing to a spirit of service and collaboration within our community

Our business community values IVC

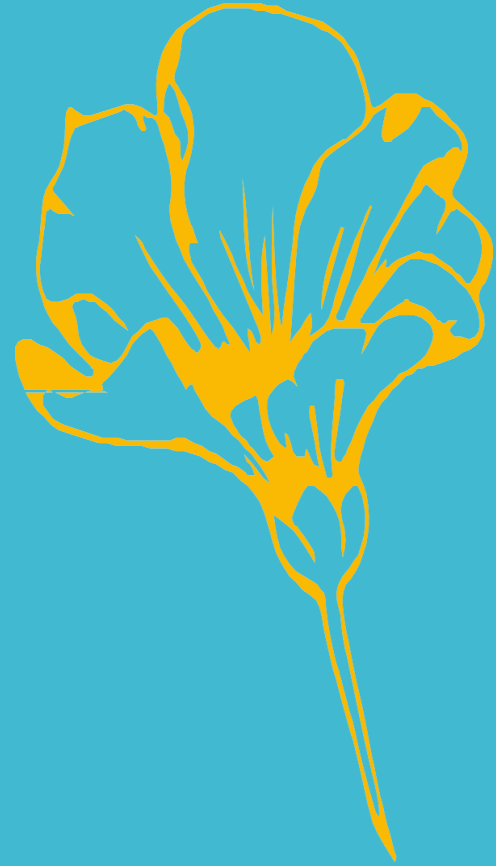


How are we
funded and how
can you support
your neighbors?



A Call to Action

- **IVC is funded primarily by individual donors - 82%**
 - Other sources of funding include:
 - ❖ City and community grants - 6%
 - ❖ Recurring business contributions including some from community churches - 2%
- **Our community needs your support! What can you do to support IVC?**
 - ❖ Donate – consider a recurring donation
 - ❖ Volunteer
 - ❖ Or help spread word
 - ❖ Donate
- **Come to our Auction – June 8th!**



Don't miss
IVC's much-
loved event!

- ❖ Please Join us
on Thursday,
June 8th!
- ❖ ivcbainbridge.org





Contact Us

Reach out and contact us through the following:



Island Volunteer
Caregivers

Website

www.ivcbainbridge.org

Office number

206-842-4441

Physical Address

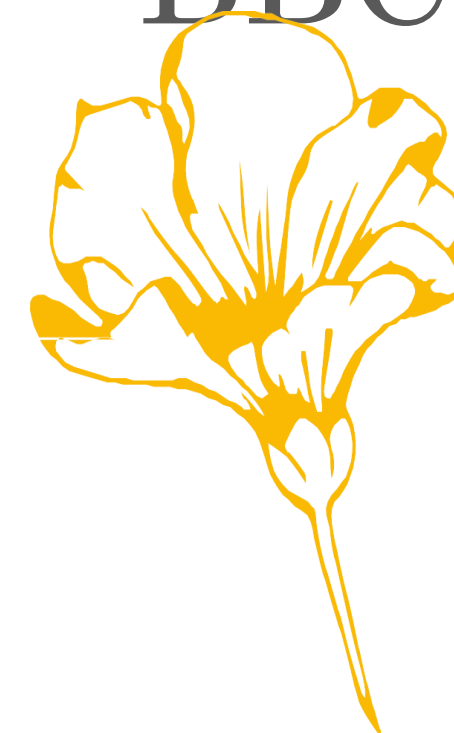
147 Finch Place SW, Suite 4

Social Media

Facebook and
Instagram



Thank you for having me
BBC!



Island Volunteer
Caregivers